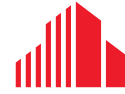


FOR LEASE

Kelly-Carlos Professional Center

11595 Kelly Rd / Fort Myers, FL 33908



CUSHMAN &
WAKEFIELD

EXECUTIVE OFFICE SUITES



BUILDING FEATURES

Available Size	Suites starting at 202+ SF
Rate	\$15.00 PSF Gross
Zoning	C1A - Commercial
Year Built	1982
Traffic Count	18,300 - Annual Average Daily Traffic (San Carlos & Kelly Rd.)
STRAP #	06-46-24-00-00003.1100

PROPERTY HIGHLIGHTS

- ◇ IMMEDIATE OCCUPANCY AVAILABLE
- ◇ SECURED BUILDING w/ 24-HR ACCESS
- ◇ QUIET & PROFESSIONAL ON-SITE MANAGEMENT
- ◇ IDEAL FOR BUSINESS OFFICE, FINANCIAL, THERAPIST & MORE
- ◇ FULLY FUNCTIONING EXECUTIVE CENTER WITH CONFERENCE ROOMS, KITCHENETTES, WAITING AREAS
- ◇ 2 CONFERENCE ROOMS w/ UNLIMITED MONTHLY USE
- ◇ CONVENIENTLY LOCATED NEAR THE BEACH AREAS OF SANIBEL, CAPTIVA AND FORT MYERS BEACH



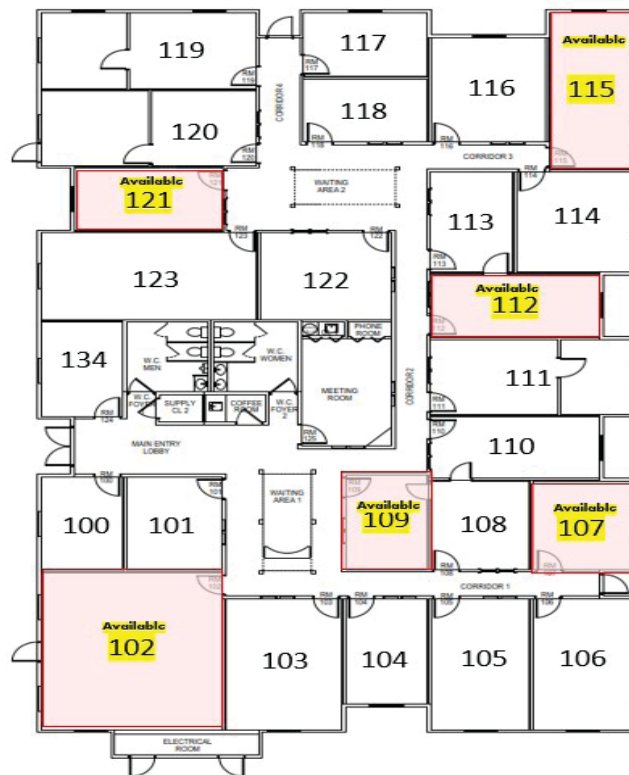


Building 100

Space Available

UNIT	SUITE SIZE	MONTHLY BASE RENT	**SALES TAX (6%)	TOTAL RENT
Suite 102	743± SF	\$928.75	\$55.73	\$984.48
Suite 107	233± SF	\$291.25	\$17.48	\$308.73
Suite 109*	202±	\$252.50	\$15.15	\$267.65
Suite 112	281± SF	\$351.25	\$21.08	\$372.33
Suite 115*	342+ SF	\$427.50	\$25.65	\$453.15

100 CARLOS
Building



*Available 10/1/2022

**Subject to change

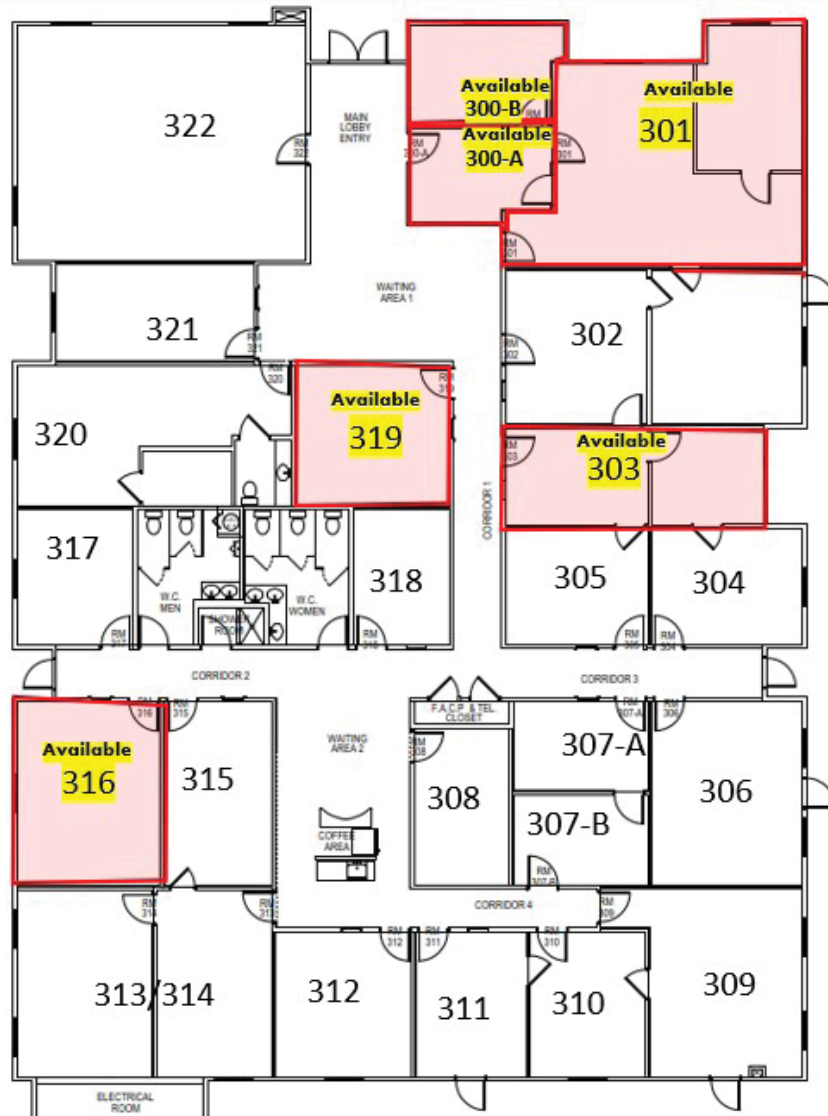


Building 300

Space Available

UNIT	SUITE SIZE	MONTHLY BASE RENT	**SALES TAX (6%)	TOTAL RENT
Suite 300AB	385± SF	\$481.25	\$28.88	\$510.13
Suite 301	791± SF	\$988.75	\$59.33	\$1,048.08
Suite 303* AVAILABLE AUGUST 2022	358± SF	\$447.50	\$26.85	\$474.35
Suite 316	373± SF	\$466.25	\$27.98	\$494.23
Suite 319*	305± SF	\$381.25	\$22.88	\$404.13

300 McGREGOR
Building



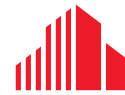
*Available 8/1/2022

**Subject to change

FOR LEASE

Kelly-Carlos Professional Center

11595 Kelly Rd / Fort Myers, FL 33908



**CUSHMAN &
WAKEFIELD**

Aerial / Location Map

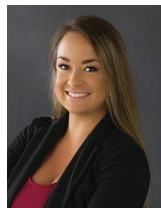


Demographics

	1 Mile	2 Mile	3 Mile
Population	8,571	17,655	15,393
Median HH Income	\$52,679	\$64,154	\$69,798
Daytime Population	9,008	17,016	14,829



Gary Tasman
CEO & Principal Broker
+1 239 489 3600
gtasman@cpswfl.com



Hanna Ray
Director
+1 239 489 3600
hray@cpswfl.com

5220 Summerlin Commons
Blvd, Suite 500
Fort Myers, FL 33907
Main +1 239 489 3600
www.cpswfl.com