



**CUSHMAN &
WAKEFIELD**

COMMERCIAL
PROPERTY
SOUTHWEST FLORIDA

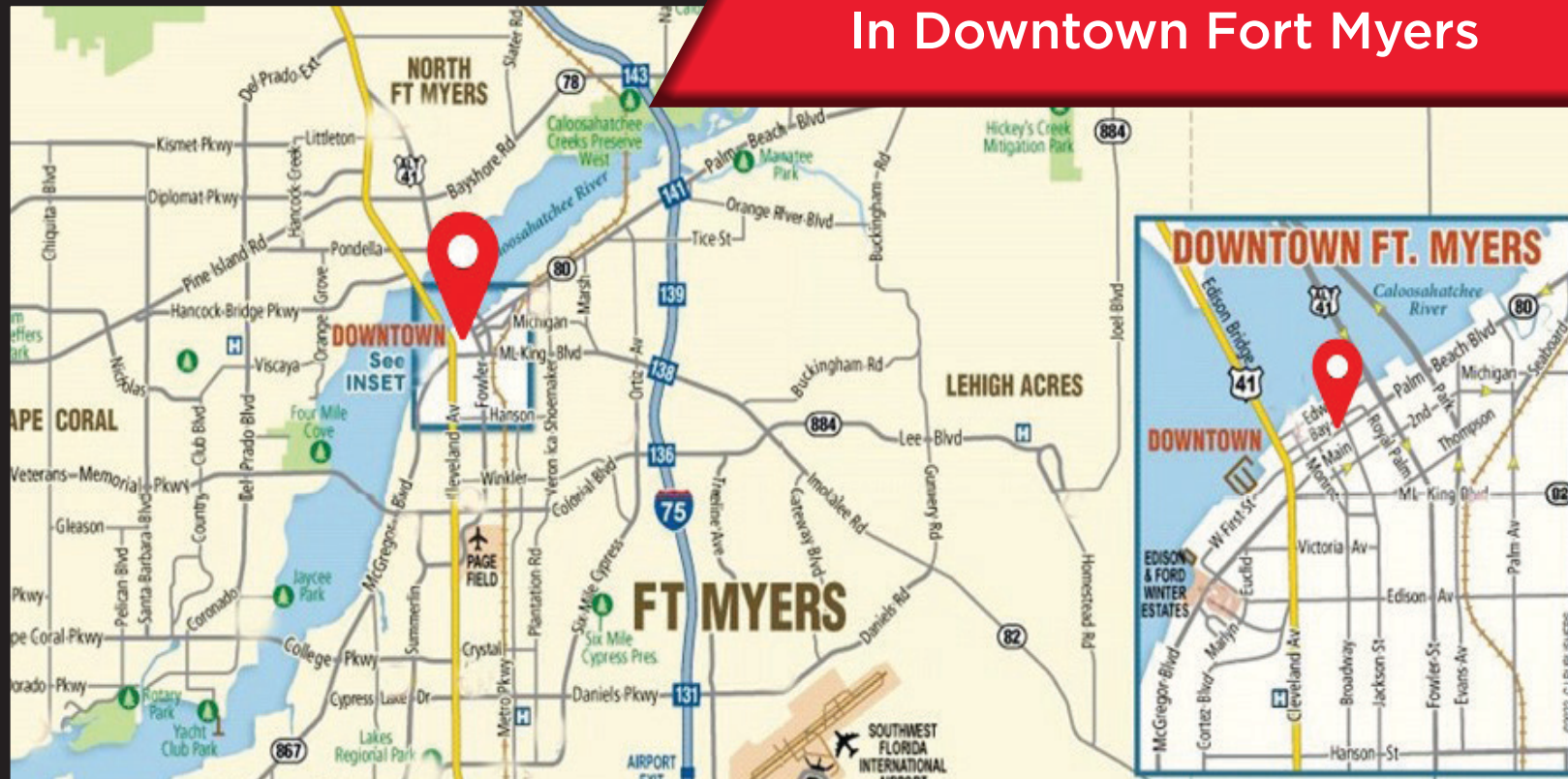
FOR LEASE

The Bradford Arcade

1412 Jackson St. Unit 2,3,4

Fort Myers, FL 33907

**3 Units Coming Soon
In Downtown Fort Myers**



Gary Tasman
CEO & Principal Broker
+1 239 489 3600
gtasman@cpswfl.com



Gretchen Smith
Senior Director
+1 239 489 3600
gsmith@cpswfl.com



5220 Summerlin Commons Blvd. Suite 500
Fort Myers, FL 33907
239 489 3600
www.cpswfl.com

The Bradford Arcade

1412 Jackson St.
Unit 2,3,4

- 3 2nd Floor Office Spaces Coming Available 1/1/2023
- All Three Fully Built Out Offices Some Offering Windows Facing First St
- Direct Access From Jackson St With Exterior Signage, Main Lobby, And Interior Directory
- Prime Location In Downtown Fort Myers Above Goodwill Blu



CUSHMAN &
WAKEFIELD

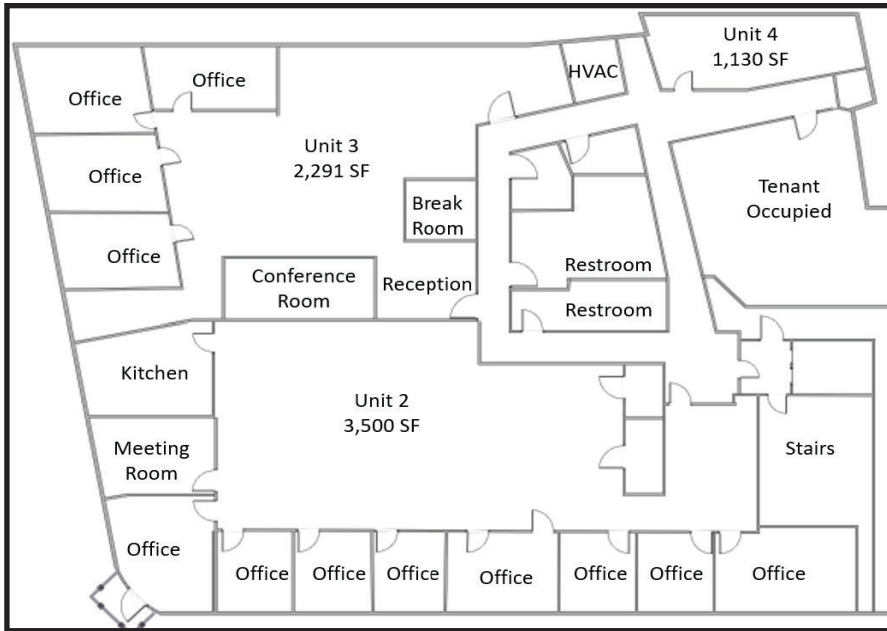
COMMERCIAL
PROPERTY
SOUTHWEST FLORIDA



**CUSHMAN &
WAKEFIELD**

COMMERCIAL
PROPERTY
SOUTHWEST FLORIDA

Floor-plans/Unit Information 1412 Jackson St. Unit 2,3,4 Fort Myers, FL 33907



PROPERTY FEATURES

PRICE:

Lease Rate: \$25 MG PSF/YR

Availabilities:

Unit 2 - 3,500 SF

Unit 3 - 2,291 SF

Unit 4 - 1,130 SF

Zoning and Approved Uses:

U-CTR Urban Center
Approved for Office Use, Perfect
for Law Office, Architect, IT

Year Built:

1901 (Effective Year 1983)

Location:

Great Location in Historic
Downtown Fort Myers, All Units
Directly Above Goodwill Blu

Unit 2- 3,500 SF

Approximately 9 Private Offices,
Conference Room, Kitchen, Nice Reception,
And All Offices Offer Windows Facing First St.

Unit 3 - 2,291 SF

Three Offices Facing First St, One Office With
No Windows But all Glass Outside Walls, Large
Conference Room, Printing Area and Open Cubicle Area

Unit 4 - 1,130 SF

2 - 4 Partitioned Offices, Open Cubicle Area,
Rear Copy/File Room

Parking Information

Paid Parking Per Key Fob
\$55/Month At the
Florida Rep Bay St.
Parking Lot

Gary Tasman

CEO & Principal Broker
+1 239 489 3600
gtasman@cpswfl.com



Gretchen Smith

Senior Director
+1 239 489 3600
gsmith@cpswfl.com



5220 Summerlin Commons Blvd. Suite 500
Fort Myers, FL 33907
239 489 3600
www.cpswfl.com