

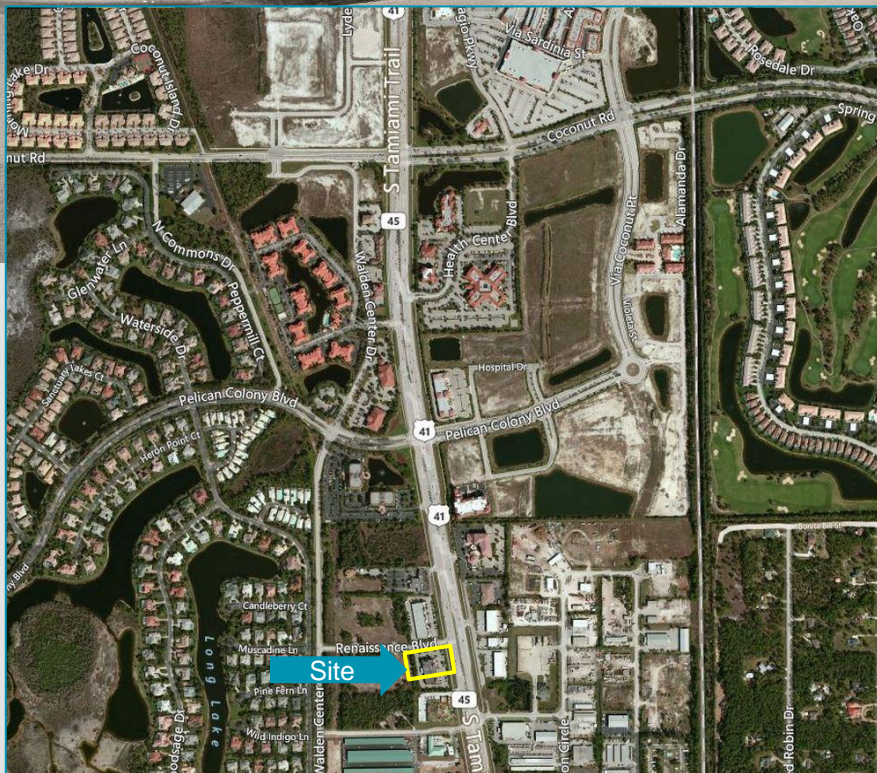
**2ND FLOOR EXECUTIVE SUITES
ABOVE WILSON LIGHTING**

BUILDING FEATURES

LEASE RATE	\$35.00-37.00
UNIT SIZES	95-270 SF
YEAR BUILT	2001
ZONING	CPD
PARCEL ID	16-47-25-B2-02200.C000

Property Highlights

- Units are all on the 2nd floor, above the Wilson Lighting Store
- Includes a shared conference room, elevator, mailbox & 24/7 access. No Wi-Fi or Phone Incl.
- On-site building management
- Building fronts on US-41
- Easy access to FGCU, I-75, three regional malls, Naples & Fort Myers
- Not all uses will apply here – call for details



For more information, please contact:

GARY TASMAN
CEO/Principal Broker
239.489.3600
gatasman@cpswfl.com

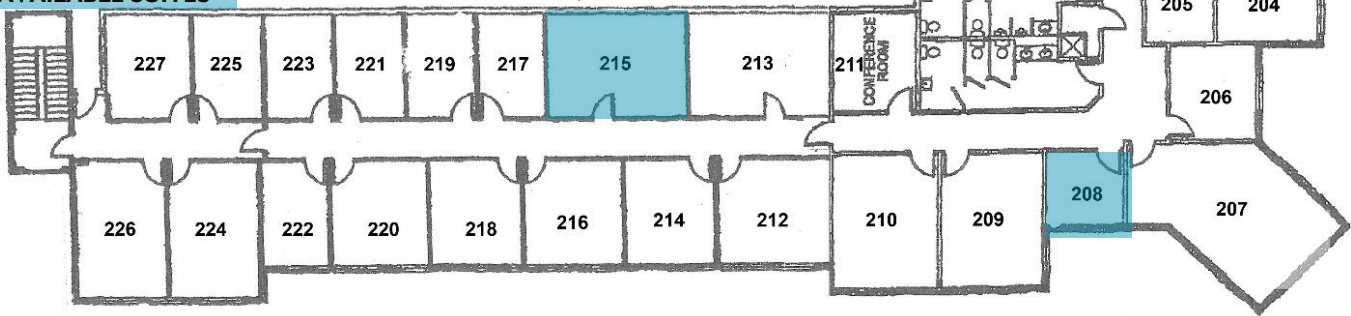
HANNA RAY
Director
239.489.3600
hray@cpswfl.com

5220 Summerlin Commons Blvd. Ste. 500
Fort Myers, FL 33907
239.489.3600
www.cpswfl.com



UNIT #	UNIT SIZE	PRICE PER MONTH	SALES TAX (6%)	MONTHLY TOTAL
208	95 SF	\$292.92	\$17.57	\$310.49
215	270 SF	\$787.50	\$47.25	\$834.75

AVAILABLE SUITES



The floor plan shows a long corridor with units on both sides. Units 208 and 215 are highlighted in blue. Unit 215 is a larger unit, while unit 208 is a smaller unit. The plan also shows a conference room, restrooms, and a staircase.

US 41 SIDE

GARY TASMAN
CEO/Principal Broker
239.489.3600
gtasman@cpswfl.com

HANNA RAY
Director
239.489.3600
hray@cpswfl.com

5220 Summerlin Commons Blvd. Ste. 500
Fort Myers, FL 33907
239.489.3600
www.cpswfl.com