

# COMMONS V

MEDICAL OFFICE BUILDING

800 GOODLETTE RD NORTH  
NAPLES, FL 34102

Premier Medical Office Space for Lease



 **CUSHMAN & WAKEFIELD**  
5220 Summerlin Commons Blvd., Suite 500 Fort Myers, Florida 33907  
COMMERCIAL  
PROPERTY  
SOUTHWEST FLORIDA  
Building owned and managed by  
**HEALTHCARE REALTY**

**GARY TASMAN**  
CEO & Principal Broker  
+1 239 489 3600  
gtasman@cpswfl.com

**VANESSA TYLER**  
Director  
+1 239 489 3600  
vtyler@cpswfl.com

# Opportunity

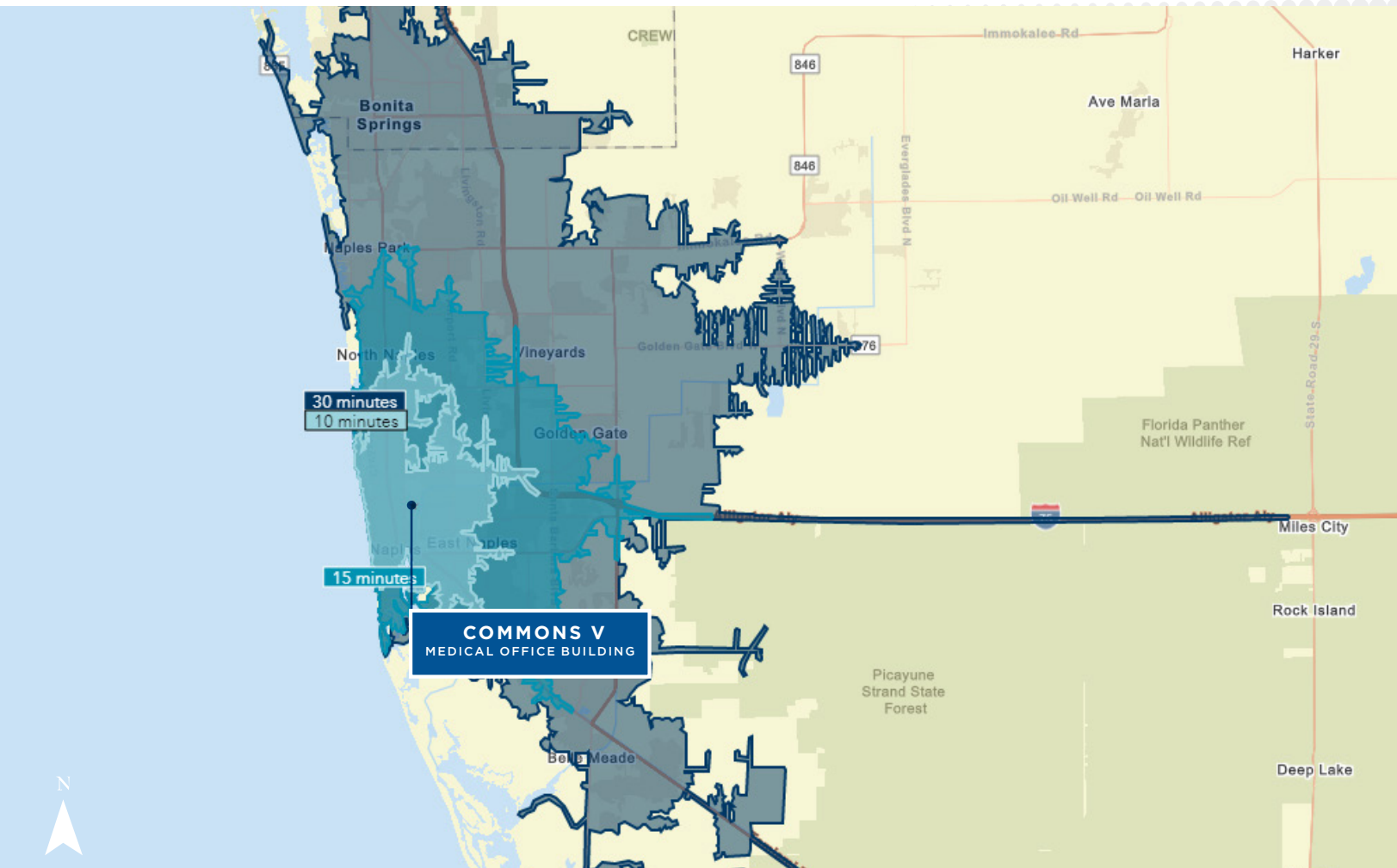
- Three story medical office building totaling 60,008 RSF
- Located in one of the fastest growing coastal communities in Southwest Florida
- One mile from Naples Community Hospital-Downtown, a 420-bed hospital specializing in cardiology, oncology, surgery, diagnostics, and more
- Referral opportunities from other providers
- Drive up patient pick-up and drop off
- Ample parking

## SIZE

60,008 SF

## DEMOGRAPHICS

	1 MILE	3 MILES	5 MILES
2022 TOTAL POPULATION	3,856	44,111	112,092
2022 MEDIAN AGE	48.8 Yrs	57.7 Yrs	56.8 Yrs
2022 AVERAGE HOUSEHOLD INCOME	\$69,207	\$74,300	\$105,262



**CUSHMAN & WAKEFIELD**

5220 Summerlin Commons Blvd., Suite 500 Fort Myers, Florida 33907

COMMERCIAL  
PROPERTY  
SOUTHWEST FLORIDA

Building owned and managed by  
**HEALTHCARE REALTY**

**GARY TASMAN**

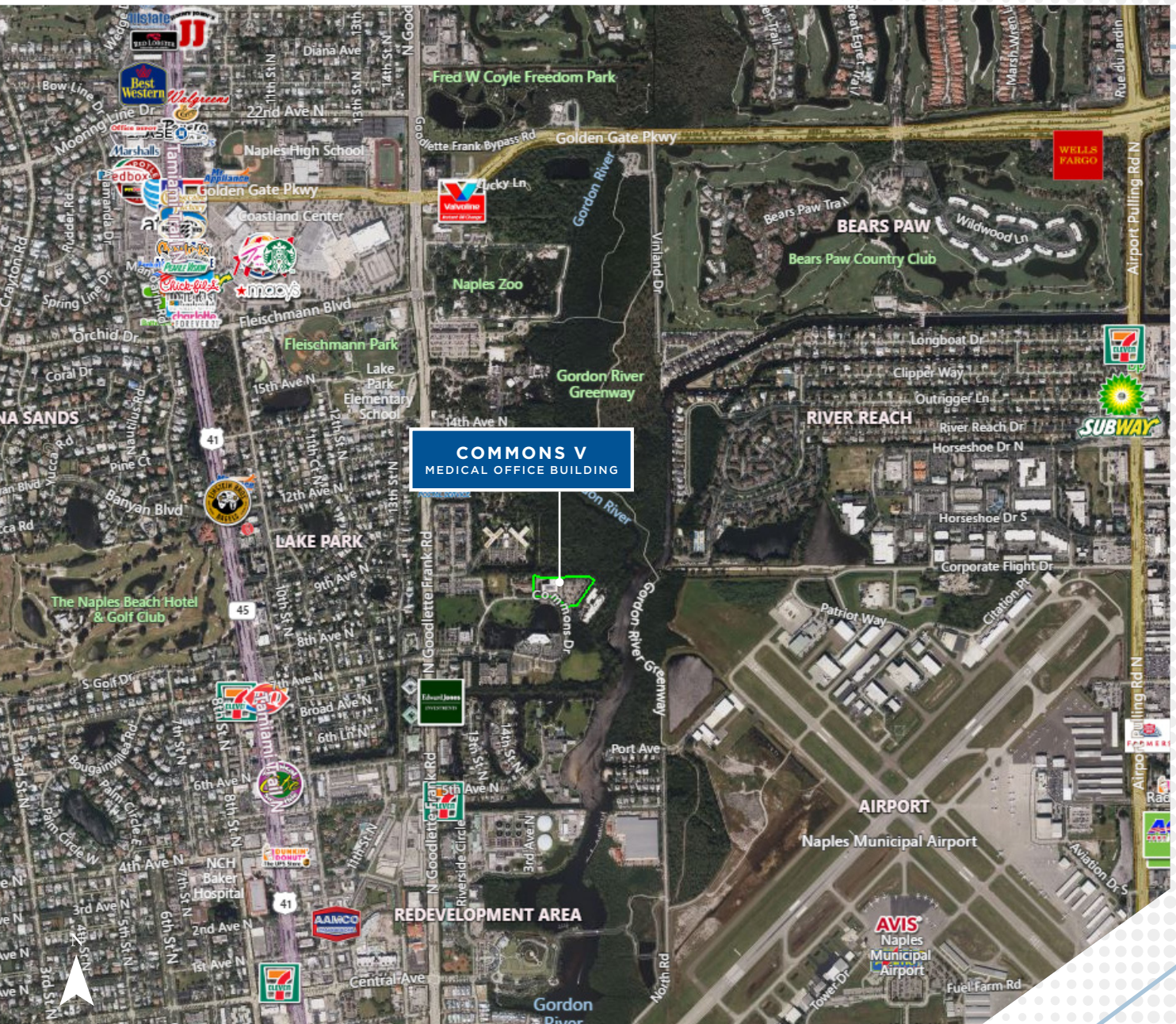
CEP & Principal Broker  
+1 239 489 3600  
gtasman@cpswfl.com

**VANESSA TYLER**

Director  
+1 239 489 3600  
vtyler@cpswfl.com



# Nearby Amenities



**CUSHMAN & WAKEFIELD**

5220 Summerlin Commons Blvd., Suite 500 Fort Myers, Florida 33907

COMMERCIAL  
PROPERTY  
SOUTHWEST FLORIDA

Building owned and managed by  
**HEALTHCARE REALTY**

**GARY TASMAN**

CEP & Principal Broker  
+1 239 489 3600  
gtasman@cpswfl.com

**VANESSA TYLER**

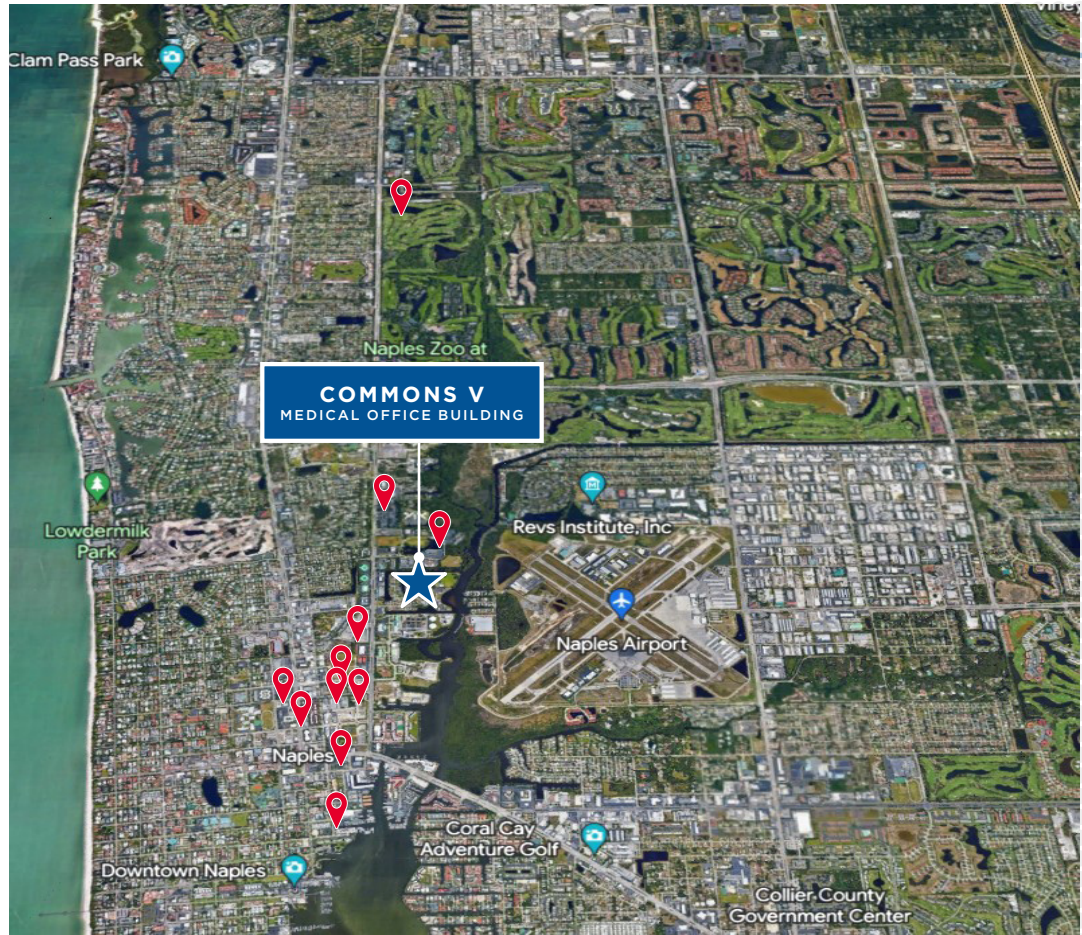
Director  
+1 239 489 3600  
vtyler@cpswfl.com



# COMMONS V

## MEDICAL OFFICE BUILDING

Nearby Medical



## Premier Medical Office Space for Lease

**GARY TASMAN**  
CEO & Principal Broker  
+1 239 489 3600  
gtasman@cpswfl.com

800 GOODLETTE RD NORTH  
NAPLES, FL 34102

**VANESSA TYLER**  
Director  
+1 239 489 3600  
vtyler@cpswfl.com



**CUSHMAN & WAKEFIELD**

COMMERCIAL  
PROPERTY  
SOUTHWEST FLORIDA

Building owned and managed by  
**HEALTHCARE REALTY**

©2023 Cushman & Wakefield. All rights reserved. The information contained in this communication is strictly confidential. This information has been obtained from sources believed to be reliable but has not been verified. NO WARRANTY OR REPRESENTATION, EXPRESS OR IMPLIED, IS MADE AS TO THE CONDITION OF THE PROPERTY (OR PROPERTIES) REFERENCED HEREIN OR AS TO THE ACCURACY OR COMPLETENESS OF THE INFORMATION CONTAINED HEREIN, AND SAME IS SUBMITTED SUBJECT TO ERRORS, OMISSIONS, CHANGE OF PRICE, RENTAL OR OTHER CONDITIONS, WITHDRAWAL WITHOUT NOTICE, AND TO ANY SPECIAL LISTING CONDITIONS IMPOSED BY THE PROPERTY OWNER(S). ANY PROJECTIONS, OPINIONS OR ESTIMATES ARE SUBJECT TO UNCERTAINTY AND DO NOT SIGNIFY CURRENT OR FUTURE PROPERTY PERFORMANCE. COE-PM-WEST-03/09/23

# COMMONS V

## MEDICAL OFFICE BUILDING

800 GOODLETTE RD NORTH  
NAPLES, FL 34102

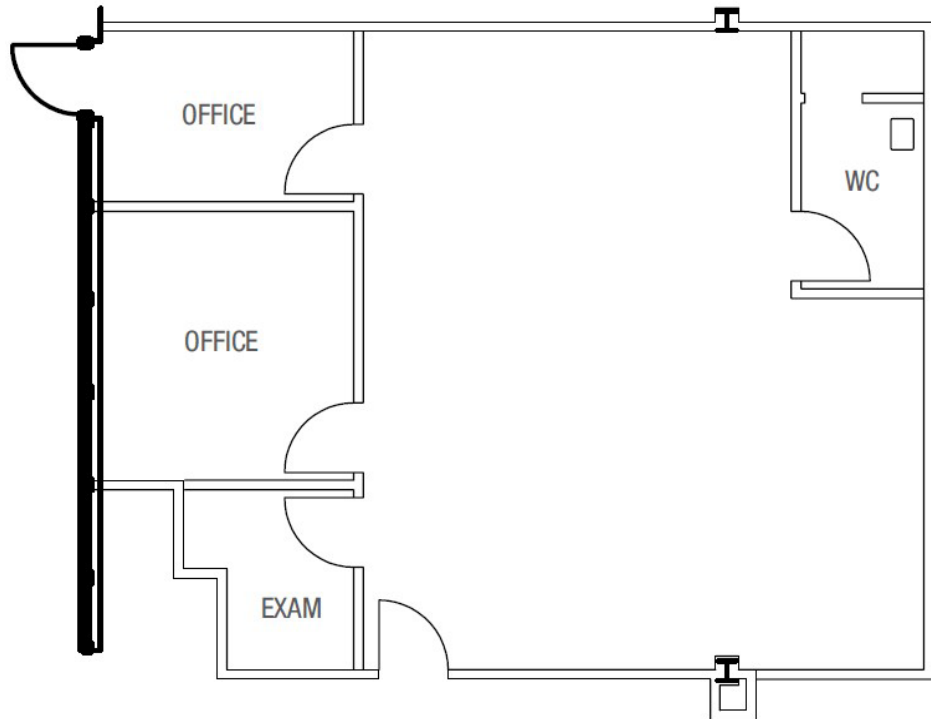
Suite 135 | 1,086 SF

### COMMONS V MEDICAL OFFICE BUILDING

800 Goodlette Road North, Naples, Florida 34102

### SUITE 135

1,086 RSF



# COMMONS V

MEDICAL OFFICE BUILDING

800 GOODLETTE RD NORTH  
NAPLES, FL 34102

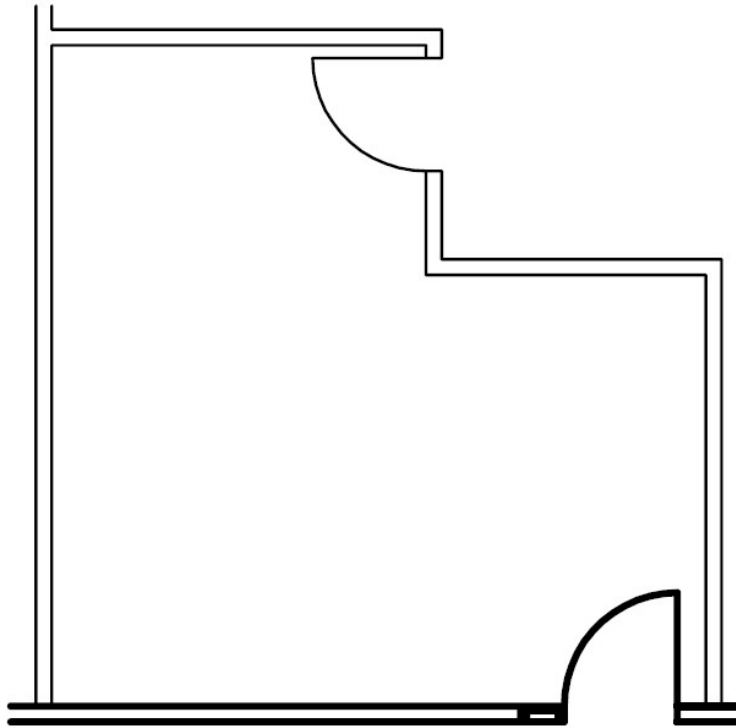
Suite 210 | 298 SF

## COMMONS V MEDICAL OFFICE BUILDING

800 Goodlette Road North, Naples, Florida 34102

## SUITE 210

298 RSF



**CUSHMAN &  
WAKEFIELD**

COMMERCIAL  
PROPERTY  
SOUTHWEST FLORIDA

5220 Summerlin Commons Blvd., Suite 500 Fort Myers, Florida 33907

Building owned and managed by  
**HEALTHCARE REALTY**

### GARY TASMAN

CEP & Principal Broker  
+1 239 489 3600  
gtasman@cpswfl.com

### VANESSA TYLER

Director  
+1 239 489 3600  
vtyler@cpswfl.com



# COMMONS V

## MEDICAL OFFICE BUILDING

800 GOODLETTE RD NORTH  
NAPLES, FL 34102

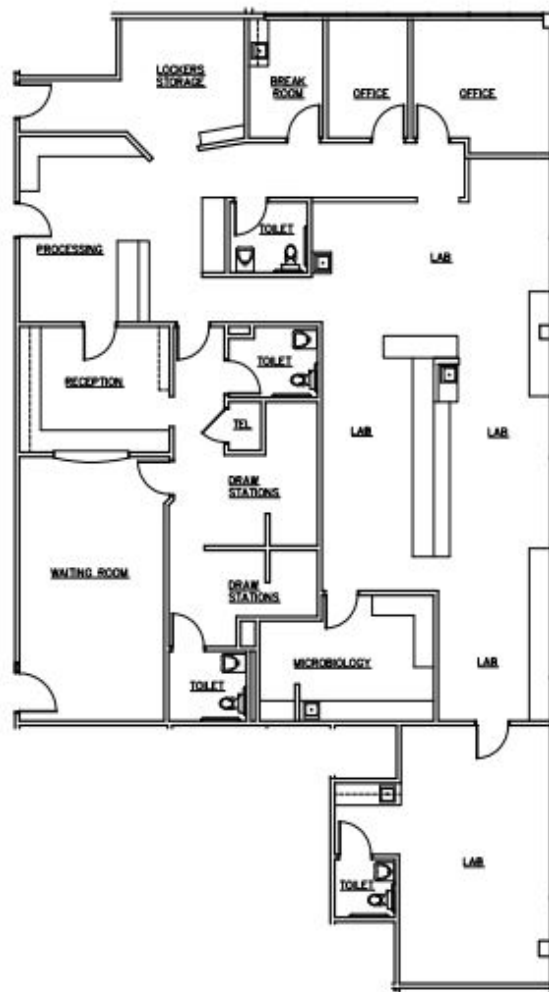
Suite 250 | 4,030 SF

### COMMONS V MEDICAL OFFICE BUILDING

800 GOODLETTE ROAD NORTH, NAPLES, FLORIDA 34102

### SUITE 250

±3,645 RSF



**CUSHMAN & WAKEFIELD**  
5220 Summerlin Commons Blvd., Suite 500 Fort Myers, Florida 33907  
COMMERCIAL  
PROPERTY  
SOUTHWEST FLORIDA

Building owned and managed by  
**HEALTHCARE REALTY**

**GARY TASMAN**  
CEP & Principal Broker  
+1 239 489 3600  
gtasman@cpswfl.com

**VANESSA TYLER**  
Director  
+1 239 489 3600  
vtyler@cpswfl.com