

FOR LEASE

8391-8399 Littleton Rd.

North Fort Myers, FL 33904



**CUSHMAN &
WAKEFIELD**

**COMMERCIAL
PROPERTY
SOUTHWEST FLORIDA**



Cushman & Wakefield | Commercial Property Southwest Florida is pleased to present the lease of industrial warehouse spaces in the North Fort Myers submarket. The property is located off of Cleveland Ave/US-41 with frontage on Littleton Rd. The property has a 14' - 18' clear height, 2 docks, and 13 drive-in doors. The amenities include a fenced lot along the perimeter of the buildings, pylon signage, and ample parking.

Property Highlights

Address	8391/8395/8421/8399 Littleton Rd. North Fort Myers, FL 33904
Year Built	1983
Total Bldg. SF	57,600 SF
Available SF	9,600-19,200 SF
Lease Rate	\$12.00 NNN
CAM	\$3.91 / SF
Submarket	North Fort Myers
Dock Doors	2
Drive-Ins	13
Clear Height	14'-18'
Zoning	C2 - Commercial



Industrial Spaces - 9,600-19,200 SF
Lease Rate: \$12.00 / SF NNN
CAM: \$3.91 / SF

Space Available

Unit	Size (SF)	Lease Rate	CAM (PSF)	Sales Tax	Monthly Total*
8391	9,600 SF	\$12.00 NNN	\$3.91	\$763.68	\$13,491.68
8421	9,600 SF	\$12.00 NNN	\$3.91	\$763.68	\$13,491.68



FOR LEASE

8391-8399 Littleton Rd.

North Fort Myers, FL 33904



**CUSHMAN &
WAKEFIELD**

COMMERCIAL
PROPERTY
SOUTHWEST FLORIDA

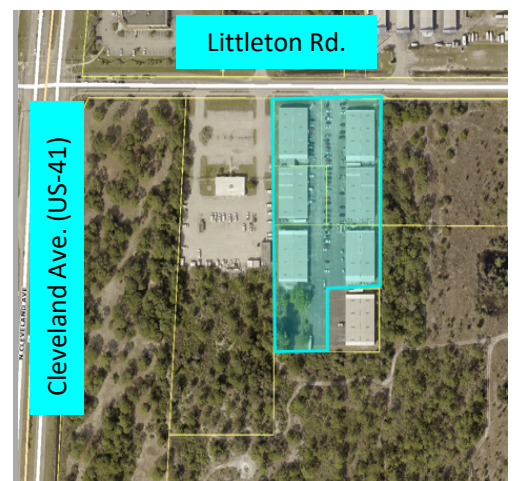


Demographics

	1 Mile	3 Mile	5 Mile
Population	5,847	43,750	108,307
AVG. HH Income	\$36,969	\$46,675	\$51,462
Total Businesses	181	1,588	4,629

Traffic Counts

Littleton Rd.	8,500 AADT
Cleveland Ave. (US-41)	31,500 AADT



Gary Tasman
CEO & Principal Broker
+1 239 489 3600
gtasman@cpswfl.com



Shawn Stoneburner
Senior Director
+1 239 489 3600
sstoneburner@cpswfl.com



5220 Summerlin Commons Blvd. Suite
500
Fort Myers, FL 33907
239 489 3600
www.cpswfl.com