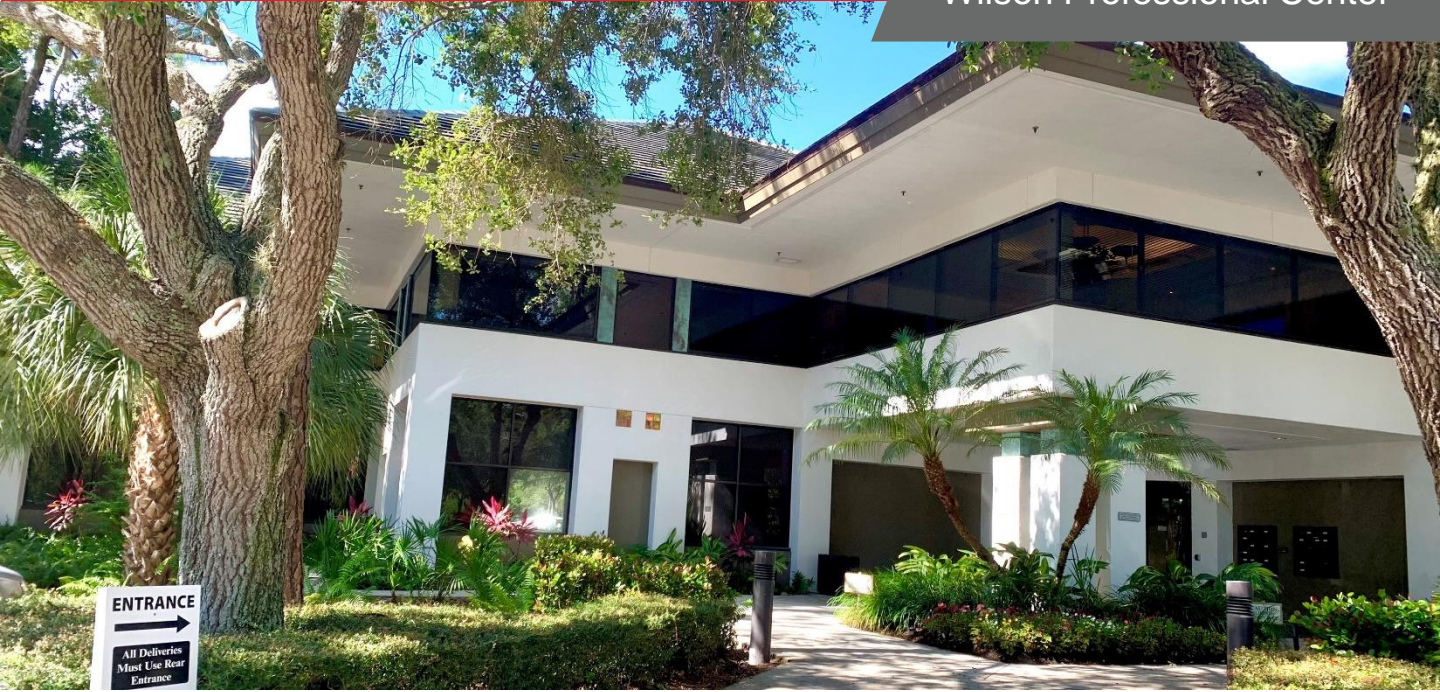


Wilson Professional Center


Property Highlights

- Easy access to I-75
- Proximity to downtown Naples and Immokalee Rd.
- Ample parking with 34 covered spaces
- Park-like setting
- Back-Up generator On-Site
- Desirable location with atrium and signage

Building Features

Year Built	1990
Zoning	PUD-Collier County
Property ID#	00264800004

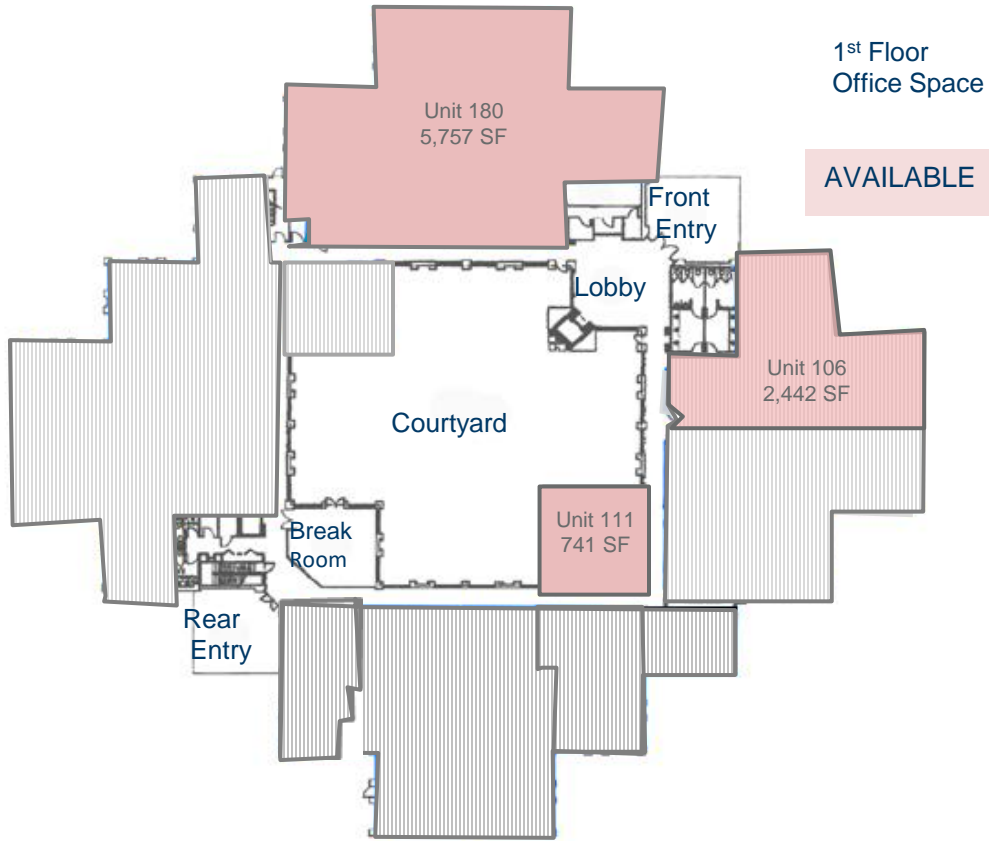
SUITE	SIZE (RSF)	LEASE RATE	MONTHLY BASE RENT	CAM (PSF)	MONTHLY CAM	MONTHLY TOTAL
106	±2,442	\$18.00 PSF	\$3,663.00	\$7.27	\$1,479.45	\$5,476.71 Including Tax
111	±741	\$18.00 PSF	\$1,111.50	\$7.27	\$448.92	\$1,661.85 Including Tax
180	± 5,757	\$18.00 PSF	\$8,635.50	\$7.27	\$3,487.78	\$12,911.29 Including Tax

*Unit 106 available on 1/1/2022

GARY TASMAN
 CEO & Principal Broker
 239.489.3600
 gtasman@cpswfl.com

SHAWN STONEBURNER
 Senior Director
 239.489.3600
 sstoneburner@cpswfl.com

5220 Summerlin Commons Blvd. Ste. 500
 Fort Myers, FL 33907
 239.489.3600
 www.cpswfl.com



GARY TASMAN
CEO & Principal Broker
239.489.3600
gtasman@cpswfl.com

SHAWN STONEBURNER
Senior Director
239.489.3600
sstoneburner@cpswfl.com

5220 Summerlin Commons Blvd. Ste. 500
Fort Myers, FL 33907
239.489.3600
www.cpswfl.com