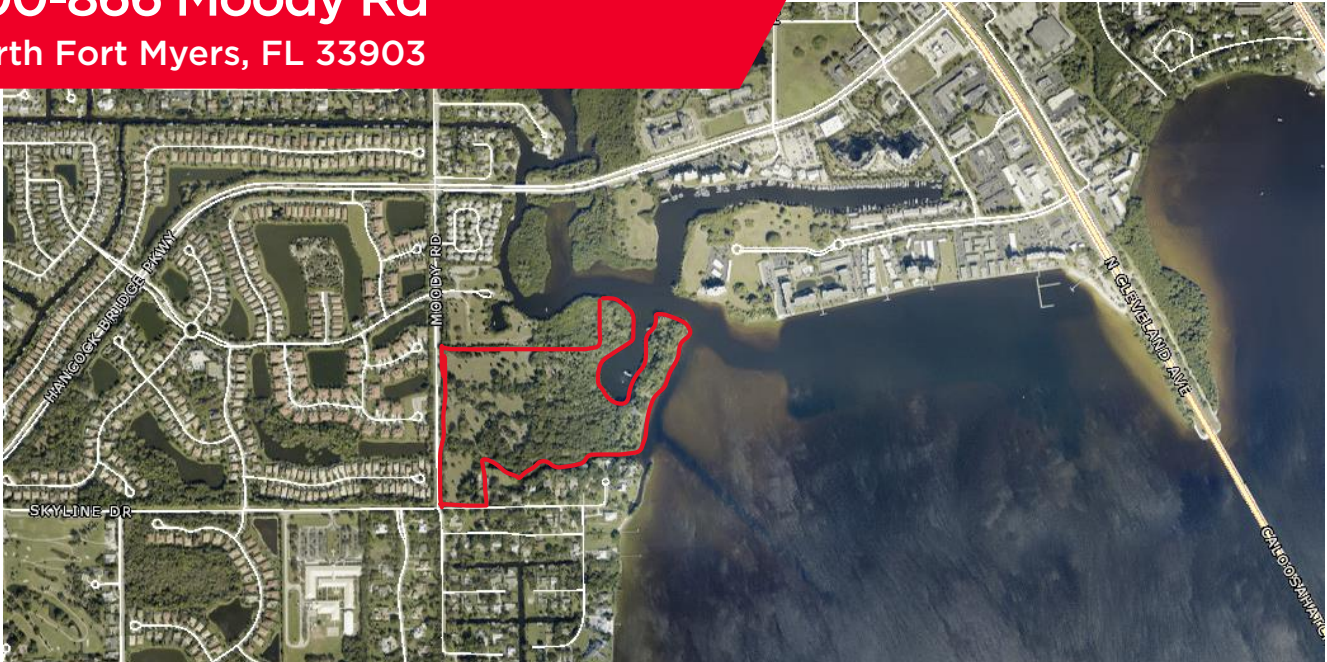


FOR SALE

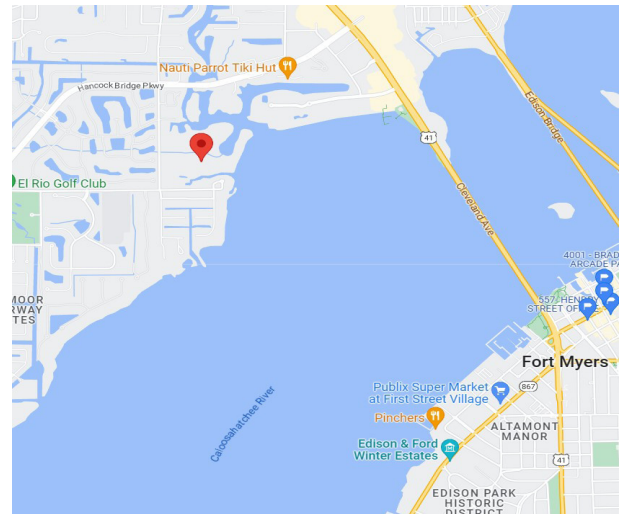
800-866 Moody Rd North Fort Myers, FL 33903



COMMERCIAL
PROPERTY
SOUTHWEST FLORIDA



Cushman & Wakefield | Commercial Property Southwest Florida is pleased to present these seven vacant land parcels in North Fort Myers totaling approximately 40.56 acres. With extensive frontage on the Caloosahatchee River, this is a unique residential development opportunity. Waterfront sites of this size on the Caloosahatchee this close to downtown Fort Myers (with direct Gulf access by water) are very rare. The site is also close to amenities such as Publix and other shopping/retail establishments.



Property Highlights

Sale Price	\$8,000,000
Total Land Size (AC)	±40.56 acres
Total Land Size (SF)	±1,766,793.6 SF
Type	Land
Dimensions	Irregular
Zoning	AG-2
Future Land Use	Suburban

Property STRAP Numbers

10-44-24-00-01048.0000	872 Moody Rd.	10.07 AC
10-44-24-00-01049.0000	864/868 Moody Rd.	12.55 AC
10-44-24-00-01049.0010	866 Moody Rd.	8.09 AC
10-44-24-00-01048.0010	Access Undetermined	2.85 AC
10-44-24-00-01052.0010	Access Undetermined	0.61 AC
10-44-24-00-01052.0000	854 Moody Rd.	2.89 AC
10-44-24-00-01053.0000	100 Skyline Dr.	3.50 AC

Gary Tasman
CEO & Principal Broker
+1 239 489 3600
gtasman@cpswfl.com



Lane Boy
Executive Director, CCIM
+1 239 489 3600
lboy@cpswfl.com



5220 Summerlin Commons Blvd. Suite 500
Fort Myers, FL 33907
239 489 3600
www.cpswfl.com