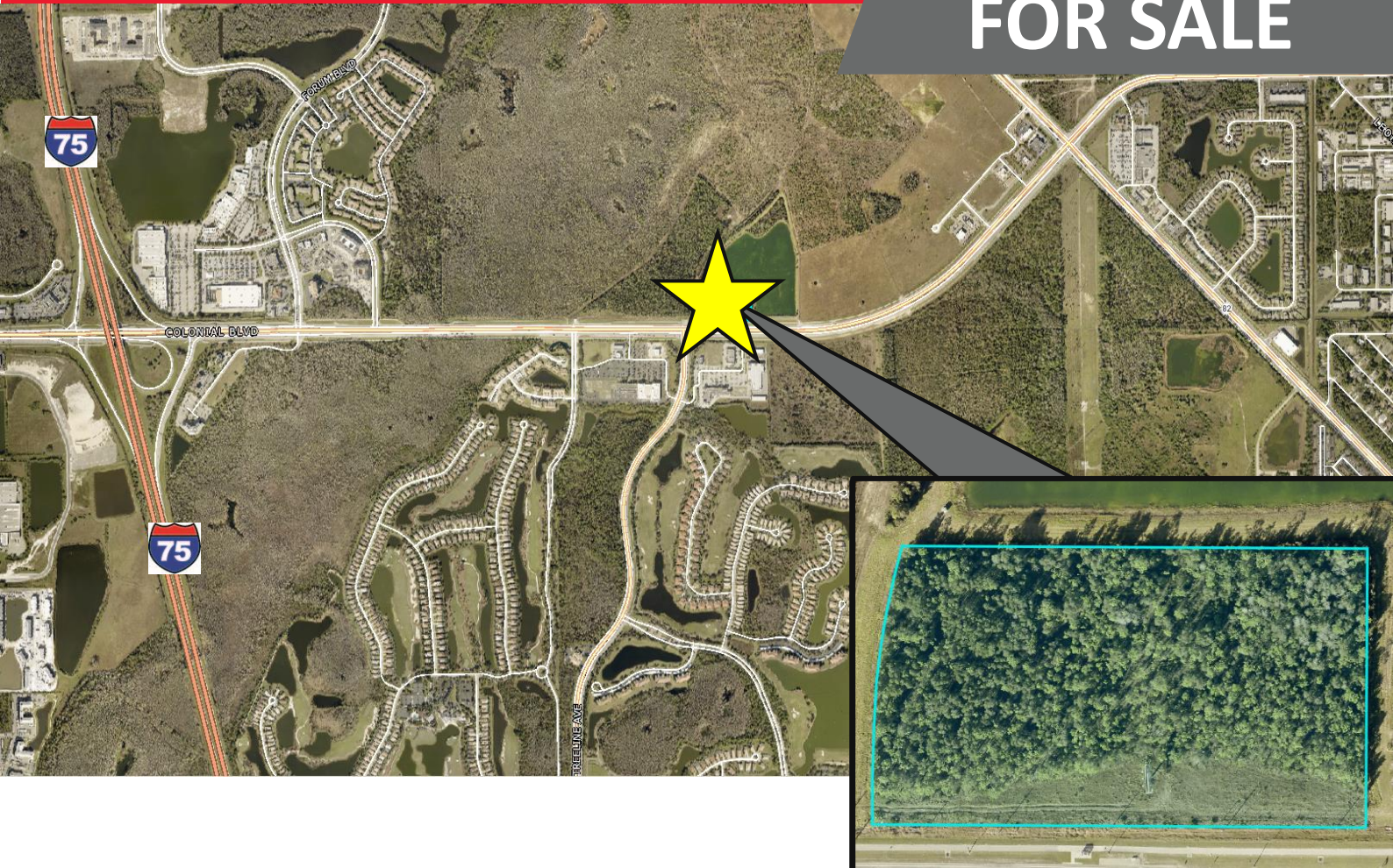


FOR SALE



Property Highlights:

- Located on Lee County’s busiest East/West corridor
- High traffic counts
- Close proximity to I-75
- High profile location that will be attractive to many different types of businesses
- Close to future Treeline extension
- Near signalized intersection

Property Details	
Asking Price	\$2,310,000 or \$9.52 PSF
Property Type	Vacant Land
Strap #:	26-44-25-P3-00064.0010
Lot Size	5.57 ± Acres (242,629 ± SF)
Zoning	PUD – Planned Unit Development
Submarket	City of Fort Myers

For more information, please contact:

GARY TASMAN
CEO & Principal Broker
239.489.3600
qtasman@cpswfl.com

SHAWN STONEBURNER
Senior Director
239.489.3600
ssoneburner@cpswfl.com

5220 Summerlin Commons Blvd. Ste. 500
Fort Myers, FL 33907
239.489.3600
www.cpswfl.com